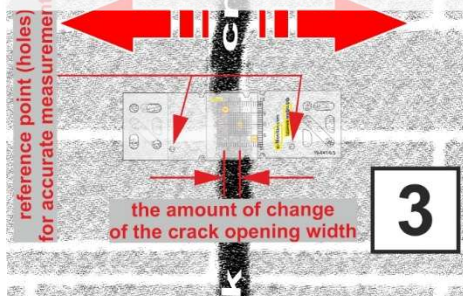
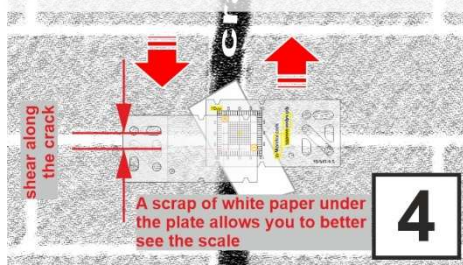


When the crack opens and closes, the magnitude of the changes is visible on the horizontal scale. It can also be determined by measuring the distance between the reference point (3).



With a shear along the crack, the magnitude of the changes is visible on a vertical scale.

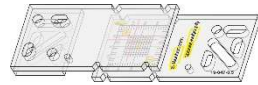


Sole trader Bezrodnykh Alexei
Russia, Novosibirsk
zi@zi-monitor.com
<https://zi-monitor.com>
Tel: +7-383-310-4305

USAGE GUIDE

Crack monitor zi-2.0 (Tell-Tale Econom)

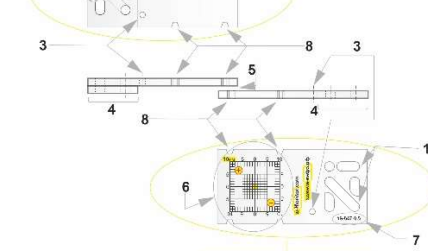
Manufacturer's code ik031



Detailed scheme Crack monitor zi-2.0

I - Indicative plate (Transparent plastic, thickness 2 mm)

1. Holes for fastening screws (4xø5mm)
2. Pointing crosshairs (engraving + coloring)
3. Reference point (in the form of a hole)
4. Mounting location
5. Spacing (damps movement - default zero)
6. Readout scale (2D, 1 mm)
7. Batch number
8. Grooves for temporary fastening
9. of plates with each other



II - Plate with scale (Transparent plastic, thickness 2 mm)

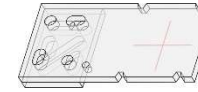
The monitor consists of two parts:

I - Plate with scale



Plate with scale (transparent in this model) is marked with millimeter divisions in the vertical and horizontal directions. The starting point is in the center

II - Indicative plate

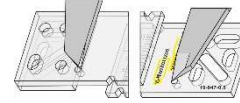


Indicative plate is transparent with an index crosshair in the center.

Description

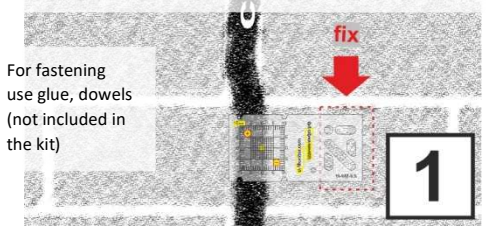
Fixing the crack monitor to the surface is done with glue or dowels (not included).

Precise measurements along the X axis are performed using a caliper (mainly electronic caliper) using the crack monitor's reference holes (3).



Visual control of the change in the position of the structures is carried out according to the index crosshair (2) and the crack monitor's scale (6).

Fasten the plate with scale (I) on one side of the crack. For fastening a sufficiently even area is selected, plastering and finishing layers are removed. If the additionally used fixing dowels of sufficient length, then the finishing can be not removed.



For fastening use glue, dowels (not included in the kit)

Then the indicative plate (II) is fastened on the other side of the crack. Due to the higher mounting platform, it will be located above the plate with scale (I). In this model, you can mount both plates at the same time. To do this, pre-connect them using rubber ties (included in the kit). Ties are put in special grooves (8)

